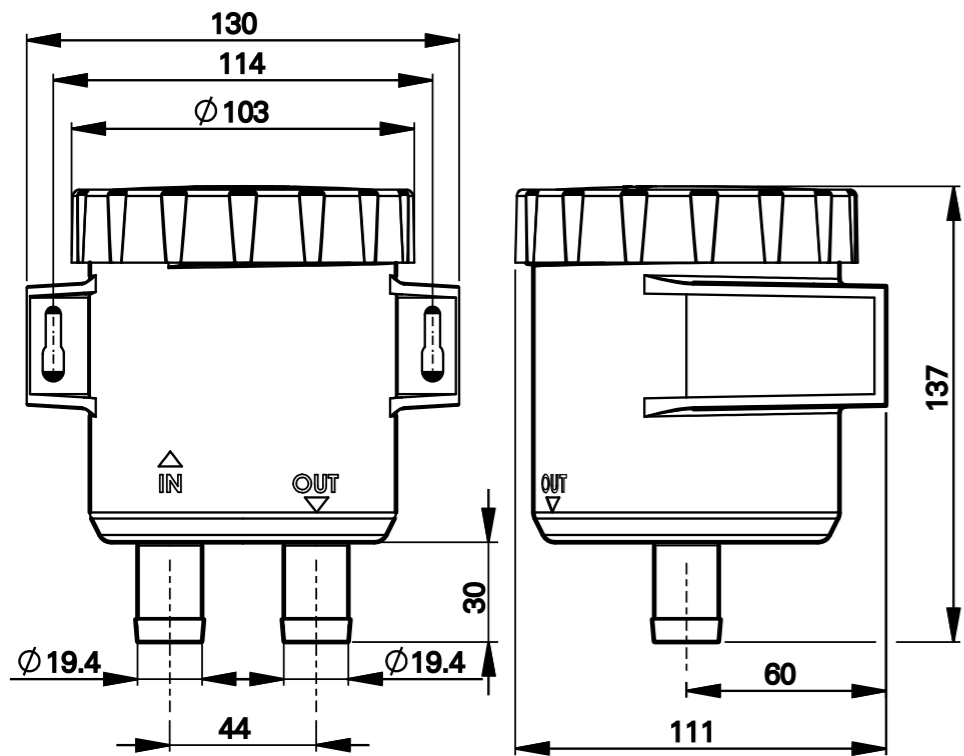
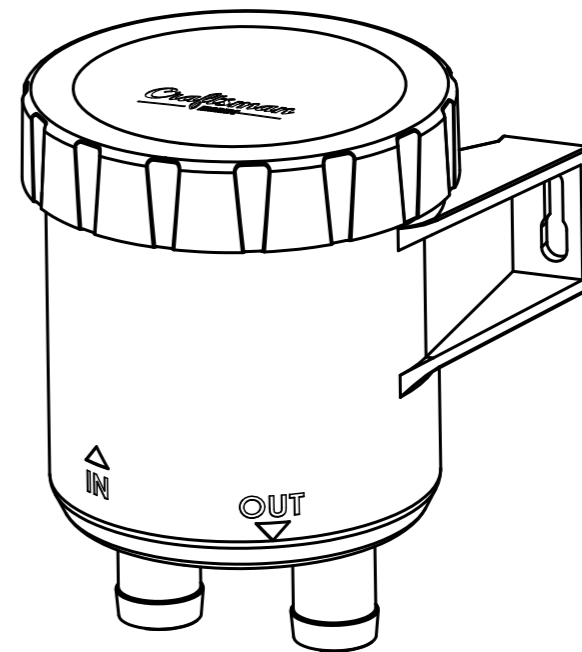
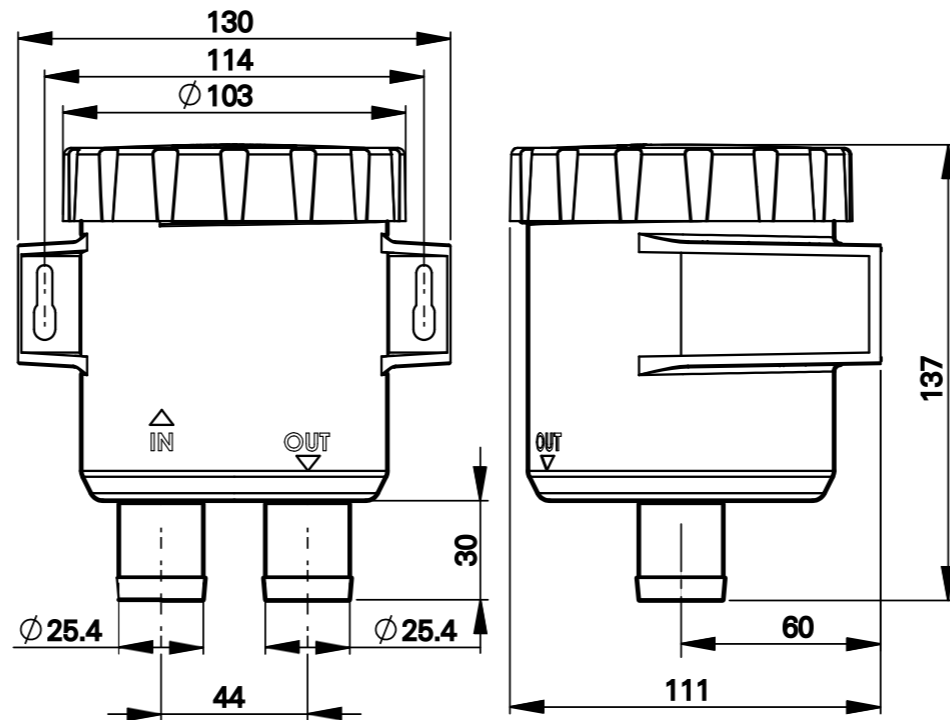


Principal dimensions AG.010.20019



Principal dimensions AG.010.20025



Craftsman
MARINE

RAW WATER STRAINER
INSTALLATION / INSTRUCTIONS

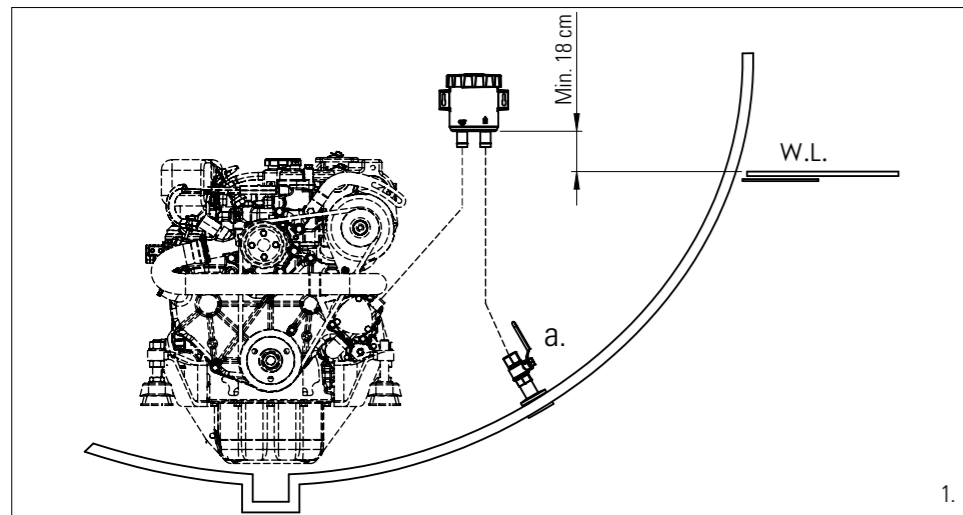
AG.010 - 20019
AG.010 - 20025

Installation

Preface

Craftsman Marine raw water strainers are specifically designed to filter small dirt particles from the raw cooling water, before it is used to cool the engine (or other equipment, such as a generator set). The raw water strainer is designed to trap

the maximum amount of dirt particles inside the filter element. Make sure that each piece of machinery has its own strainer. Never use one filter unit in combination with two aggregates.



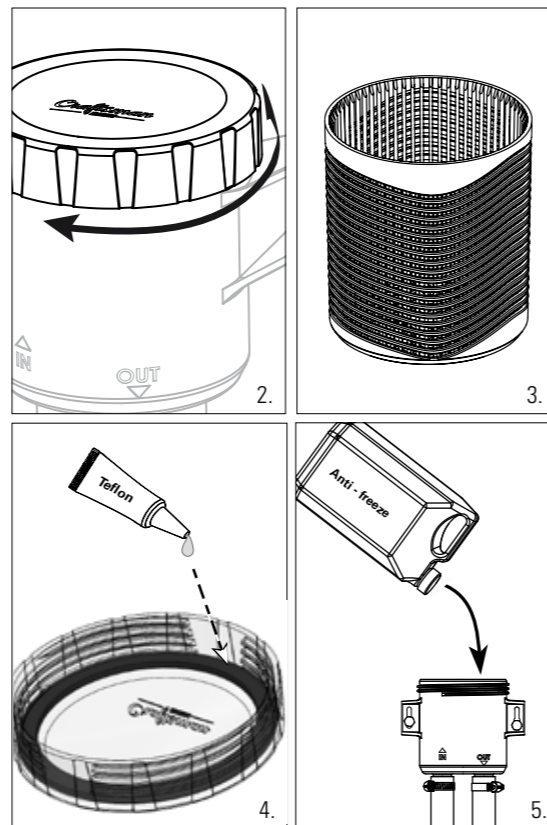
Installation

Always position the filter above the waterline (W.L., see picture 1), with the cover on top. Use the screw holes incorporated in the strainer housing; also bolts (maximum M6) may be used.

Make sure that a seacock will be positioned directly

behind the skin fitting or the water scoop, before fitting hoses onto the filter housing. Use a good hose clamp in order to fit the hoses onto the filter housing.

Daily use



Each time: inspect/clean the filter element before starting the engine. If the strainer is used for air conditioning systems, generator sets, etc., regular inspection is highly recommended,

so as to avoid damage to the equipment. The cover is transparent: a quick inspection of the filter element can be carried out, no need to unscrew. Before removing the cover the seacock (picture 1. a) must be closed! Open the cover (picture 2.), remove the filter element (picture 3.) and rinse the element until all dirt particles are removed. Reposition the filter element inside the housing and turn the cover by hand to close it. **Never use a tool to tighten the cover!** If the cover does not seal off the unit sufficiently the seal may be greased with a bit of petroleum jelly or Teflon spray (picture 4.). Do not forget to **reopen the seacock before starting the engine!**

Use in winter

The materials selected for the manufacture of a Craftsman Marine strainer guarantee excellent service, also at low temperatures. However, in order to avoid any damage, it is recommended to fill the entire cooling system with anti-freeze (picture 5.) before the winter starts, or to drain the cooling system altogether. If you select anti-freeze for protection, the engine must run briefly, so as to spread the anti-freeze throughout the cooling system. Use environment-friendly anti-freeze or collect it after the winter period, so as to avoid pollution of the environment.

Technical data

Strainer type:	AG.010.20019	AG.010.20025
Filter capacity:	50 L/min.	90 L/min.
Hose connections:	19 mm (3/4")	25 mm (1")
Filter volume:	400cc	400cc
Schrews (for fitting):	max. Ø 4.2 mm	max. Ø 4.2 mm
Bolts (for fitting):	max. M6	max. M6

Scope of supply

AG 010.20019 / AG 010.20025

1. Transparent cover
2. Seal
3. Filter element
4. Housing
5. Installation instructions

Craftsman
MARINE

